

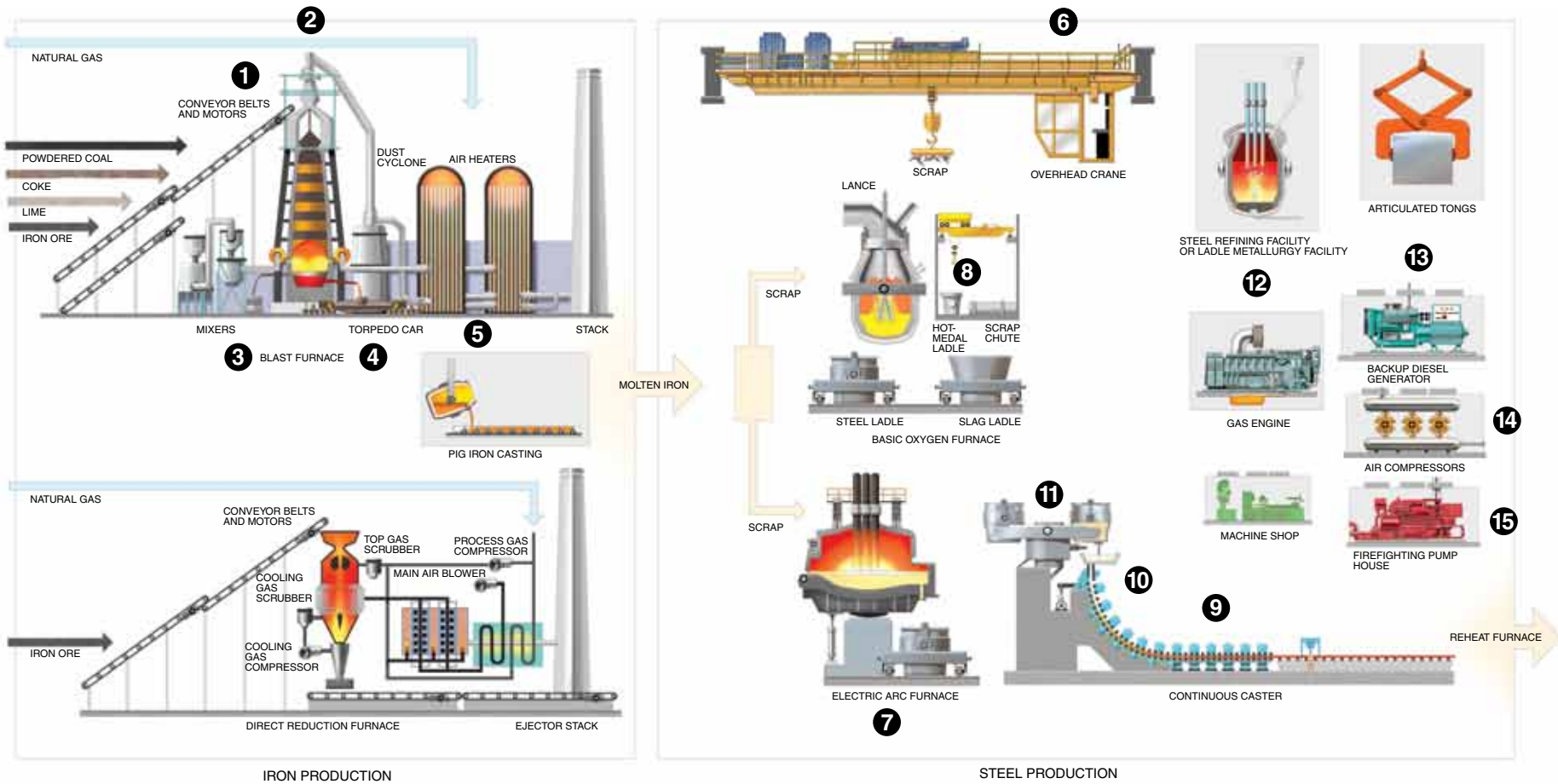
How we help keep your iron and steel hot-side operation running better — longer.

© 2011 Exxon Mobil Corporation
 Mobil, Mobil SHC, Mobilith, Polyrex, Mobilgrease, Mobilux, Rarus, Delvac, DTE, Centaur, Pegasus, and Mobilgard are trademarks of Exxon Mobil Corporation or one of its subsidiaries.

From gear drives and bearings to electric motors and hydraulic systems, whatever equipment you're lubricating, you'll find there's a Mobil Industrial Lubricant to meet your demands — each one formulated to offer outstanding protection and oil life. For a complete list of Mobil Industrial Lubricants, go to mobilindustrial.com.

- 1 Conveyors**
 - **Idler** — Mobilith SHC, Mobilgrease XHP
 - **Bearings** — Mobilith SHC, Mobilgrease XHP
 - **Couplings** — Mobilgrease XTC, Mobilux EP 111
 - **Gear Drives** — Mobil SHC 600, Mobil SHC Gear
 - **Electric Motor Bearings** — Mobilith SHC 100, Mobil Polyrex EM
- 2 Furnace Top Distributor/Feed Device**
 - **Bell type – Central Grease System** — Mobil Centaur XHP, Mobilgrease XHP
 - **Bell Less – Paul Wurth Gearbox** — Mobil SHC 600
 - **Bell Less – Bushings** — Mobil SHC Polyrex 462
- 3 Tap Drill and Mud Gun**
Mobilith SHC
- 4 Torpedo Car**
 - **Tilt Gearbox and Bearings** — Mobilith SHC
- 5 Air-Handling Fans**
Mobilith SHC 100, Mobil Polyrex EM
 - **Electric Motors** — Mobil Polyrex EM
 - **Fan Bearings** — Mobilith SHC
- 6 Overhead Cranes**
 - **Gearbox** — Mobil SHC 600
 - **Grease Points** — Mobilith SHC
- 7 Furnace**
 - **Trunnion Bearings** — Mobil Centaur XHP Mine, Mobilgrease XHP Mine

- 8 Hot Metal Ladles (BOF and EAF)**
 - **Tilt Bearings** — Mobil SHC Polyrex
 - **Gearbox** — Mobil SHC 600, Mobil SHC Gear
- 9 Caster Segments and Rollout Table**
 - **Caster and Runout Table Bearings** — Mobil Centaur XHP, Mobilgrease XHP
 - **Gearboxes** — Mobil SHC 600
- 10 Caster Mold Oscillator**
 - **Gearbox** — Mobil SHC 600, Mobil SHC Gear
 - **Hydraulic Driven**
 - **Hydraulic System** — Mobil DTE 10 Excel
- 11 Caster Ladle Turret**
 - **Roller Bearings** — Mobil SHC 1000 Special, Mobil Centaur XHP Mine, Mobilgrease XHP Mine
 - **Gearbox** — Mobil SHC 600, Mobil SHC Gear
- 12 Ancillary Equipment**
 - **Gas Engine** — Mobil SHC Pegasus
- 13 Backup Diesel Generator**
Mobilgard
- 14 Air Compressors**
 - **Reciprocating** — Mobil Rarus 800
 - **Rotary Screw** — Mobil Rarus SHC 1020
- 15 Fire Pump Equipment**
 - **Engine** — Mobil Delvac 1300 Super



Note: Schematic and product recommendations are intended as a general guide only. Products listed are typically the product series names. Please refer to equipment builder manual for final lubrication recommendations or consult your Mobil Industrial Lubricants team for additional products. NOT TO SCALE.

